



**termimesh**   
KEEPS TERMITES OUT

*The Termimesh philosophy is simple.  
Design an effective product. Install it properly.  
Encourage customers to look after it.*

No other termite control technique offers all of these features:

- Ultra marine grade stainless steel mesh.
- Environmentally friendly, flexible, non-toxic and long-life material.
- Can be installed in all types of structures.
- Quality controlled from manufacture to installation.
- Available throughout Australia.
- A once-off installation with no retreatments necessary.
- Tested and approved by authorities throughout the world.
- Installed with an outstanding, industry-leading, comprehensive, materials and workmanship warranty.
- A proven track record with hundreds of thousands of installations throughout Australia alone.
- The Termimesh System has the backing of Australia's leading specialist termite control company – TMA Corporation.

For information phone 1800 444 468  
or visit [www.termimesh.com](http://www.termimesh.com)

**HIA GreenSmart**  
Leader

# WHY DO QUALITY BUILDERS, LEADING ARCHITECTS & ASTUTE HOMEOWNERS CHOOSE THE TERMIMESH SYSTEM?

Because they care ...

About total cost,  
proven effectiveness, and  
family and community  
environments.

Only the Termimesh  
System provides a  
poison-free stainless  
steel mesh barrier which  
has a proven track record  
of effectiveness

Contact your state or local Service Centre.



**termimesh**   
KEEPS TERMITES OUT



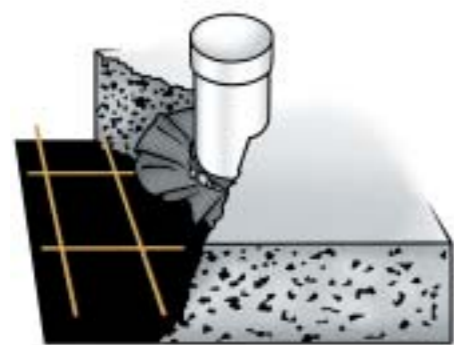
# FLEXIBLE, POROUS, STRONG POISON-FREE & LONG-LIFE ... ULTRA MARINE GRADE\* STAINLESS STEEL MESH.

The Australian-developed Termimesh System is a truly environmentally friendly termite barrier which includes a composite of superior quality materials and thoroughly researched installation techniques. It is only installed by licensed and accredited professional technicians. The three major components of the Termimesh System are an extremely flexible, high quality stainless steel mesh, a specially formulated bonding cement (Termiparge) and high quality stainless steel clamps. Termites cannot get through the mesh because it is:

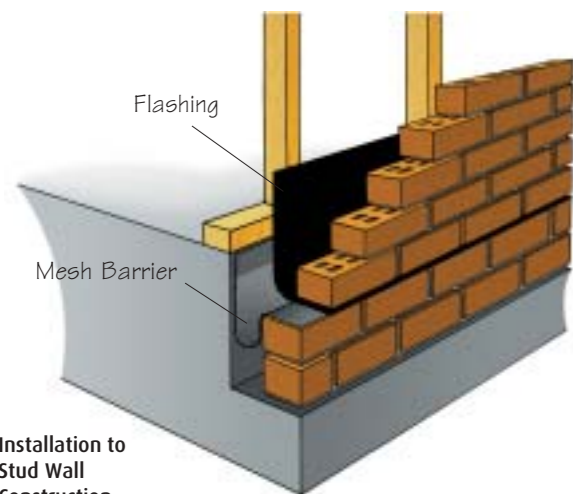
- too small to squeeze through
- too hard to chew through

New standards in termite management have been set by the Termimesh System by providing a durable barrier without the need to use worrying pesticides. The System was originally developed to counter strong community and government concerns about the environmental and health implications of long-term chemicals. These chemicals were banned in 1995 and replaced with short-term poisons which provide a temporary barrier but still come with major toxicity and retreatment concerns.

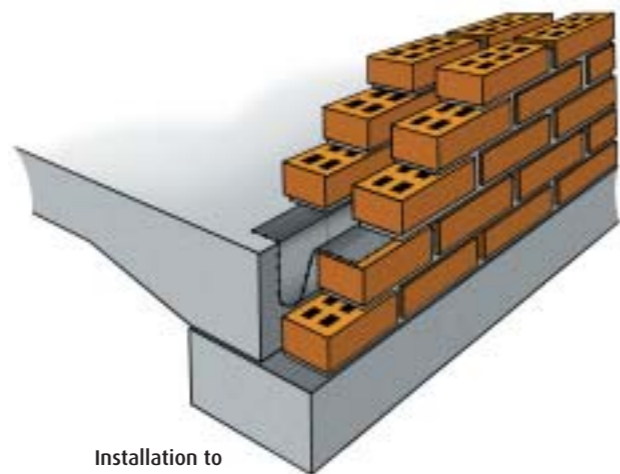
The Termimesh System is supported by a comprehensive and outstanding **timber replacement warranty**. Since its inception in the late 1980s, it has established new industry-leading standards in the design of effective and durable termite barriers, achieving the highest levels of accreditation and endorsement from building authorities in Australia and other countries.



Service Pipe Installation



Installation to Stud Wall Construction



Installation to Double Brick Construction

\* The Termimesh System is made from an extremely durable 725 stainless steel mesh. Worldwide this alloy is exclusive to the Termimesh Group and is of considerably higher quality than standard marine grade stainless steel.



**Installations:** The mesh and other components are installed by strictly accredited professionals who undergo extensive quality control training and testing. Only installations of the highest standard are accepted. The Termimesh head office undertakes regular independent audits of personnel and installations.



**Research and Development** has been ongoing since 1990. One of the first governmental bodies to become involved with the Termimesh System was the CSIRO, which was contracted to test and retest the effectiveness of the mesh in the restraint of termites. Since the highly positive conclusion of that testing, the Termimesh company (TMA Corporation) has been successfully involved with many building-related bodies, including Standards Australia, the Australian Building Codes Board and the National Registration Authority for Agricultural and Veterinary Chemicals. At its head office complex, a termite research laboratory has gained international recognition and acclaim. The research and development associated with the Termimesh System is a clear industry leader.

## Why Select the Termimesh System?

- The patented system is the world's only environmentally friendly termite barrier made from **stainless steel mesh**.
- It provides the most **effective and durable** termite barrier\*.
- The Termimesh System has been **researched and tested** at the highest level.
- It has been **approved and accredited** with certifications from all relevant governmental bodies.
- It has an impressive track record with **hundreds of thousands of installations** completed in Australia alone and with an **outstanding success rate**.
- Extremely **cost-effective**. There is no need for costly ongoing reapplications.
- The timber replacement **warranty**\*\* offered with the Termimesh System is **industry-leading** and covers materials and workmanship.
- It provides the homeowner with a **non-toxic** alternative that does not require retreatments. There are no chemical residues and it is safe to use around the house and close to where the children play.



Fine, Strong and Durable Stainless Steel Mesh



Highly Successful Field Testing

## Quality Controlled ... from Manufacture to Installation

\* Under Australian Standard As 3660.1 termite barriers installed in new constructions are designed to deter concealed entry by termites from the soil. As part of a total termite management plan, at least annual termite inspections are strongly recommended. See your Termimesh Service Centre. \*\* The Termimesh warranty is limited and conditions apply. For further details on the warranty contact your Termimesh Service Centre or visit [www.termimesh.com](http://www.termimesh.com)

# Servicing Australia



The Termimesh System has the backing of Australia's leading specialist termite control company - TMA Corporation, and is expertly supported by **Termimesh Pest Management**.

The Termimesh System is available at Service Centres throughout Australia and internationally. For information phone **1800 444 468** or visit our website at: [www.termimesh.com](http://www.termimesh.com).

# Installations for ALL Construction Types

Termimesh installation techniques normally target service pipe entry points though the concrete slab, construction joints and perimeter wall cavities. Installation techniques vary depending on the design and construction features of your home, but the System can be installed in any building type using one or more of over 80 Termimesh installation specifications, four of which are shown below.

**SPECIFICATION**

**STAINLESS STEEL MESH INSTALLATION**  
**Termiflange**  
**PENETRATION PROTECTION**  
**Type 1 - Centre of Slab - Pre-Pour**

**NOTE:** The mesh flange is fixed so as not to interfere with the vapour barrier. Ensure the mesh is not in contact with the reinforcing steel. Where necessary, isolate the stainless steel mesh from the reinforcing steel with Termiparge or gunge to prevent contact.

TMA Corporation Pty Ltd 48 Century Road MALAKA Western Australia 6200 ABN 90 509 452 475	<b>COPYRIGHT ©</b> Date: Mar 2000 Drawn: NTS Scale: NTS	<b>The Termimesh System</b> CSIRO Technical Assessment 207 For further information or additional specifications, contact 1800 444 468 or <a href="http://www.termimesh.com">www.termimesh.com</a>	SP8C0908-106 CSIRO Technical Assessment 207 Copyright © 2000 Dagfinn E. Larsen	Code Spec: 2.1
---	--	---	---	-------------------

**SPECIFICATION**

**STAINLESS STEEL MESH INSTALLATION**  
**Termiflange**  
**PENETRATION PROTECTION**  
**Cluster Penetrations**

**NOTE:** The mesh flange is fixed so as not to interfere with the vapour barrier. Ensure the mesh is not in contact with the reinforcing steel. Where necessary, isolate the stainless steel mesh from the reinforcing steel with Termiparge or gunge to prevent contact.

TMA Corporation Pty Ltd 48 Century Road MALAKA Western Australia 6200 ABN 90 509 452 475	<b>COPYRIGHT ©</b> Date: Mar 2000 Drawn: NTS Scale: NTS	<b>The Termimesh System</b> CSIRO Technical Assessment 207 For further information or additional specifications, contact 1800 444 468 or <a href="http://www.termimesh.com">www.termimesh.com</a>	SP8C0908-106 CSIRO Technical Assessment 207 Copyright © 2000 Dagfinn E. Larsen	Code Spec: 2.4
---	--	---	---	-------------------

**SPECIFICATION**

**STAINLESS STEEL MESH INSTALLATION**  
**PERIMETER INSTALLATION**  
**Cavity Wall for Brick Veneer**  
**on Rebated Slab**

**NOTE:** The mesh is purged (dressed) to the side of the rebate, sloped down into the cavity and generally run on the second course of the outside brickwork below the flashing or dampcourse.

TMA Corporation Pty Ltd 48 Century Road MALAKA Western Australia 6200 ABN 90 509 452 475	<b>COPYRIGHT ©</b> Date: Mar 2000 Drawn: NTS Scale: NTS	<b>The Termimesh System</b> CSIRO Technical Assessment 207 For further information or additional specifications, contact 1800 444 468 or <a href="http://www.termimesh.com">www.termimesh.com</a>	SP8C0908-106 CSIRO Technical Assessment 207 Copyright © 2000 Dagfinn E. Larsen	Code Spec: T.4
---	--	---	---	-------------------

**SPECIFICATION**

**STAINLESS STEEL MESH INSTALLATION**  
**CONTROL JOINT**  
**PROTECTION**

**NOTE:** The mesh is placed so as not to interfere with the vapour barrier.

TMA Corporation Pty Ltd 48 Century Road MALAKA Western Australia 6200 ABN 90 509 452 475	<b>COPYRIGHT ©</b> Date: Mar 2000 Drawn: NTS Scale: NTS	<b>The Termimesh System</b> CSIRO Technical Assessment 207 For further information or additional specifications, contact 1800 444 468 or <a href="http://www.termimesh.com">www.termimesh.com</a>	SP8C0908-106 CSIRO Technical Assessment 207 Copyright © 2000 Dagfinn E. Larsen	Code Spec: T.7
---	--	---	---	-------------------

**Over 80 Approved Installation Specifications**